



ANGOLA CAPITAL PARTNERS
AND FAZENDA GIRASSOL

The Path to Sustainable Growth

2025 IMPACT REPORT



Disclaimer

This document is for information purposes only. It is meant only to provide a broad overview for discussion purposes. No representation or warranty, expressed or implied, is or will be given by Angola Capital Partners or their respective directors, officers, employees, affiliates or advisers or any other person as to the accuracy or completeness of this document and, so far as permitted by law, no responsibility or liability is accepted for the accuracy, completeness or sufficiency thereof, or for any errors, omissions or misstatements, negligent or otherwise, relating thereto.

This document is not being made available either in whole or in part to any person in any jurisdiction where to do so would constitute a violation of the relevant laws of such jurisdiction. Accordingly, this information is not directed at, or available to any person in any jurisdiction where to do so would constitute a violation of the relevant laws of such jurisdiction. If you are resident or located in any jurisdiction into which the distribution of this information would constitute a violation of the relevant laws of such jurisdiction, you should ignore the contents of this document and return it to the sending party immediately. In accepting this document, you are confirming that the receipt of the information contained herein.

Contents

ABOUT THIS REPORT	5
MESSAGE FROM THE BOARD OF DIRECTORS	7
ANGOLA CAPITAL PARTNERS Building resilient businesses in Angola	8
AGRICULTURE IN AFRICA The challenge — and opportunity — of feeding a continent	19
FAZENDA GIRASSOL A farm model built to regenerate and scale	27
MEASURING WHAT MATTERS How we track impact across people, planet, and governance	35
FAZENDA GIRASSOL IN PRACTICE Real practices, real systems, real results.	41
EMPOWERING SMALLHOLDER FARMERS Empowering producers through markets that work.	72



About This Report

This report represents a comprehensive effort to highlight the extraordinary advancements and ongoing commitment of Fazenda Girassol to regenerative and sustainable farming practices. In a world increasingly grappling with the impacts of climate change and widening socio-economic inequality, sustainable agricultural models are no longer just ideal; they are essential for ensuring food security, environmental health, and inclusive economic growth.

Fazenda Girassol stands as a beacon of innovation in sustainable farming, integrating practices that not only restore ecological balance but also uplift communities. This report shares the farm's journey, challenges, and successes in implementing practices that regenerate the land while creating jobs, supporting families, and strengthening local economies.

The urgency of this mission is underscored by findings from the Angola Country Climate and Development Report (2022), which emphasizes the growing vulnerabilities of agricultural systems to climate shocks, particularly in regions like southern Angola. Prolonged droughts, unpredictable weather patterns, and soil degradation demand innovative solutions. Fazenda Girassol's leadership in implementing water conservation techniques, soil regeneration strategies, and sustainable crop management illustrates how agricultural businesses can thrive while addressing these global challenges.

Equally important is the farm's social footprint. By employing more than 1,200 people; many from surrounding rural communities; and investing in worker housing, food security, and capacity building, Fazenda Girassol shows how agriculture can be a force for dignity, opportunity, and social development. Women are trained to operate tractors. Workers are fed, housed, and transported. And families benefit from stable income and improved access to clean water and nutrition.

Through this report, we celebrate Fazenda Girassol's contributions and reinforce the call to action for stakeholders across the agricultural value chain. **This report is not merely a record of achievements; it is a roadmap for fostering resilience, equity, and sustainable growth in agriculture; aligned with Angola's broader goals for climate-resilient development and economic diversification.**

As we navigate a future shaped by climate uncertainty and deepening inequality, Fazenda Girassol offers a compelling case for how sustainable farming can be both a moral imperative and a viable business strategy. We invite readers to explore the transformative practices detailed in the following chapters and to join us in championing a more sustainable and inclusive agricultural future.



Sustainable businesses create happiness; not just through profit, but through purpose.

At Fazenda Girassol, over 900 workers are provided with warm, nutritious meals each day. These women are part of the team that turns nourishment into joy, and work into dignity.

Message from the Board of Directors

Dear Stakeholders,

It is with pride and purpose that we present this Impact Report; a reflection of the values, vision, and measurable progress of Angola Capital Partners and our investee, Fazenda Girassol.

As investors committed to shaping a more sustainable and inclusive future for Angola, we recognise that our responsibility extends beyond financial returns. It includes regenerating land, uplifting communities, creating resilient food systems, and building institutions that can endure. Fazenda Girassol is the embodiment of these ambitions.

Since Angola Capital Partners (ACP) inception, our mission has been to drive private sector-led development by supporting companies that address Angola's most urgent challenges; from food insecurity and rural unemployment to climate vulnerability and economic diversification. With a growing footprint and an unwavering commitment to excellence, Fazenda Girassol stands as a model for what agriculture in Angola can and should be.

Through this report, we invite you to see how impact is not an aspiration, but a measurable outcome; shaped by strategic investment, strong governance, and local expertise. From regenerative practices like rotational grazing and composting, to transformative social programs providing housing, meals, and skills development, the chapters ahead reveal the real-world application of our Environmental, Social, and Governance (ESG) framework.

As global challenges intensify; from climate change to geopolitical instability; Angola must invest in models of production that are resilient, equitable, and adaptive. Fazenda Girassol provides a blueprint. Its story is one of possibility and pragmatism, of learning and leadership, and above all, of action rooted in context.

We thank our dedicated partners, funders, and stakeholders for making this work possible. Most importantly, we acknowledge the people of Fazenda Girassol; the farmers, technicians, and workers who bring these commitments to life every day. Their stories are at the heart of this report.

Let this be not just a report of impact achieved, but a call to deepen our shared commitment to a more sustainable and inclusive Angola.

Warm regards,

The Board of Directors
Angola Capital Partners

Angola Capital Partners



Our History

Angola Capital Partners (ACP) is a private equity firm born from a strategic partnership between Banco Angolano de Investimentos (BAI) and Norfund, the Norwegian development finance institution. Established with the ambition to develop Angola's private equity market, ACP has played a leading role in mobilising capital for national development and in positioning Angola as a viable destination for long-term investment.

Since launching its first fund in 2010, ACP has raised a total of USD 87 million for long-term financing to Angolan companies. FIPA I raised USD 39 million of committed capital, now fully deployed. FIPA II closed in 2017 with USD 47.5 million of committed capital and a 10-year maturity period. These funds have been the catalyst for growth across sectors aligned with national development priorities.

The activities of both funds have resulted in several positive outcomes contributing to the Sustainable Development Goals (SDGs) and supporting Angola's national development agenda. Under the 2013-2017 National Development Plan,

ACP-supported investments have contributed to:

Job creation and income generation, particularly in rural and underserved areas

Strengthening national food security through local agricultural production

Supporting Angola's national reconstruction and infrastructure development

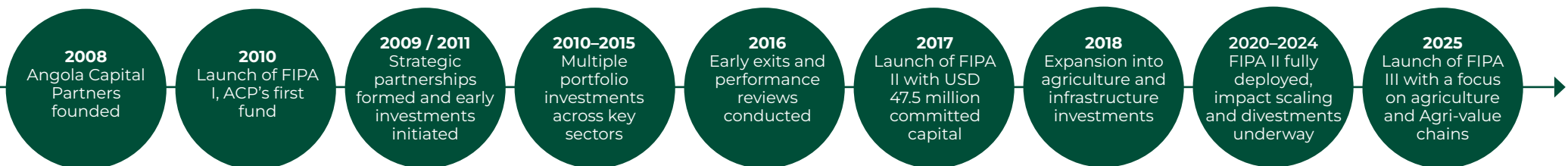
Promoting environmental protection and sustainable resource management

Advancing social development through skills training, housing, and community programs

Encouraging private sector growth and entrepreneurship to drive economic diversification

As Angola now turns its attention to the Angola 2050 Vision; a long-term national strategy aimed at achieving structural economic transformation, environmental sustainability, and inclusive prosperity; ACP's mission remains aligned. By backing scalable, impact-driven enterprises, we continue to foster the foundations of a resilient, diversified, and people-centered economy.

Having entered the divestment phase of several FIPA II investments, ACP has already commenced work on raising a third fund, which will place an even stronger emphasis on food security and agri-value chains. The new fund will leverage lessons from past investments and respond to the pressing need for sustainable food systems in Angola and the region.



Our Value Addition

At ACP, we go beyond financing. Our value addition to investee companies is threefold:

- **Providing capital**
- **Exercising financial discipline**
- **Offering long-term commitment and institutional capacity building.**

We take an active, hands-on approach, partnering closely with management teams to unlock potential and drive lasting impact. Our team brings deep expertise and sectoral experience to the table, supporting companies in making key strategic decisions that ensure long-term success.

ACPs team works directly with portfolio companies in areas such as:

- **Corporate governance and transparency**
- **Financial discipline and robust reporting systems**
- **Strategic planning and operational excellence**
- **Human capital development and leadership coaching**
- **Marketing, branding, and customer engagement strategies**
- **Environmental, Social and Governance (ESG) compliance and risk mitigation**



FINANCIAL DISCIPLINE & STRATEGIC OVERSIGHT

- Board participation & Shareholder engagement
- Budgeting, forecasting, reporting
- Risk management and ESG compliance

 **ANGOLA CAPITAL PARTNERS**

MORE THAN CAPITAL

INSTITUTIONAL CAPACITY BUILDING

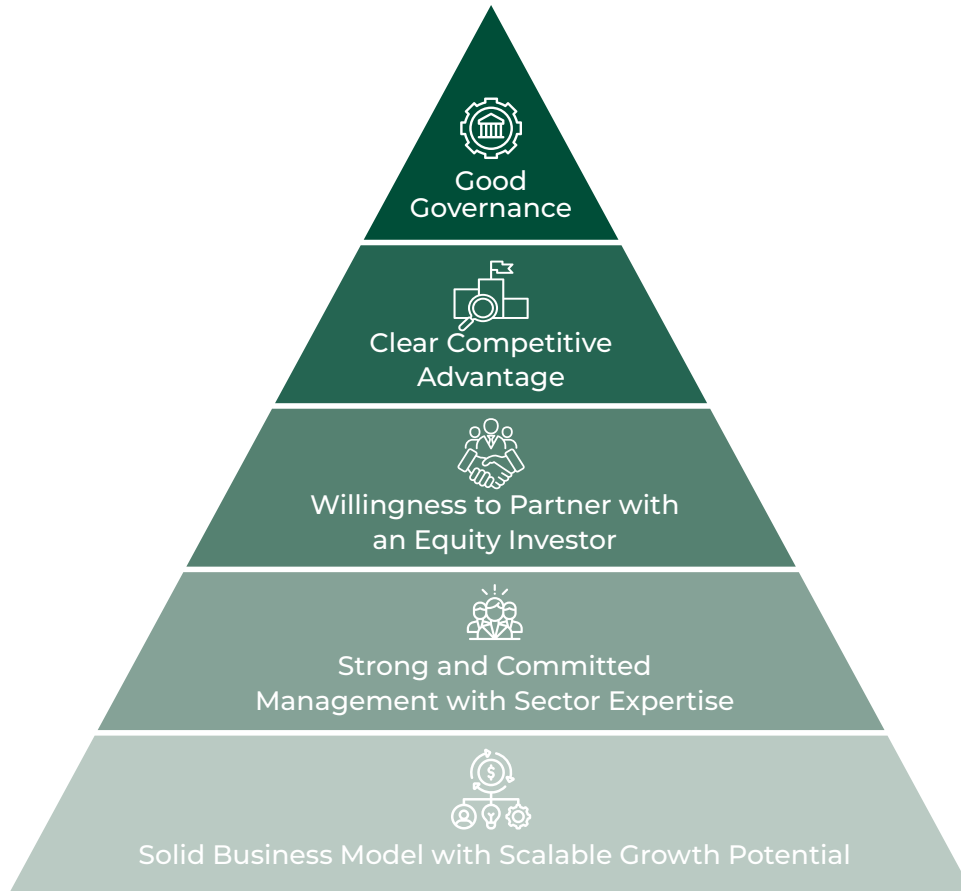
- Corporate governance
- Human capital investment
- Marketing & branding support
- Operational excellence

CAPITAL INJECTION

- Long-term equity & mezzanine financing
- Strategic co-investment opportunities
- Flexible funding structures for scalable growth
- Facilitating funding from other parties

Our Investment Criteria

We look for businesses that demonstrate:



Each of these criteria aligns with our goal of investing in companies capable of becoming national and regional champions, with the institutional strength to endure beyond the investment horizon.





We follow a structured investment process designed to identify risk, unlock opportunity, and ensure our capital contributes to inclusive and sustainable growth.

Our Investment Process: Integrated with ESG

Our Social and Environmental Management System (SEMS) guides ESG integration throughout the investment life cycle; from screening and due diligence to ownership and exit.

We assess each opportunity using three ESG lenses:

Sector and Material Risks
Regulatory, legal, and ethical considerations

Company-Specific Gaps
ESG readiness, internal controls, and mitigation plans.

Strategic ESG Opportunities
Where ESG performance creates financial and developmental upside.

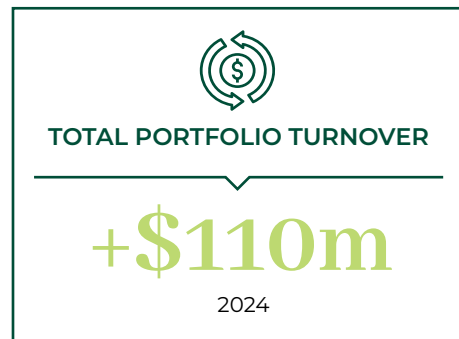
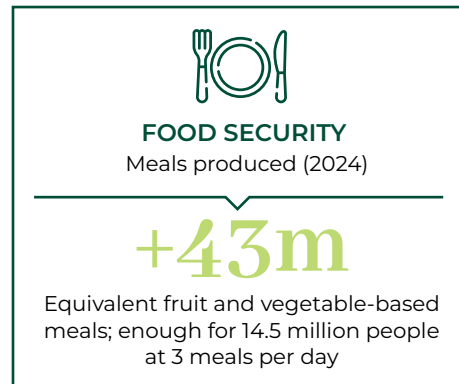
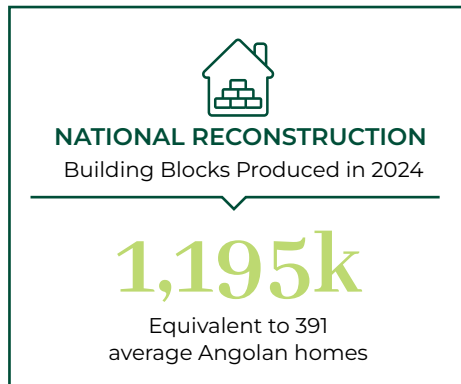
We apply the principle of materiality, recognising that the social and environmental issues that matter most to our stakeholders must be reflected in how we manage, measure, and report our impact. Our approach ensures alignment with IFC Performance Standards, national regulations, and international best practices.

ACP also maintains a strict exclusion list to ensure we do not invest in industries or practices that contradict our values.

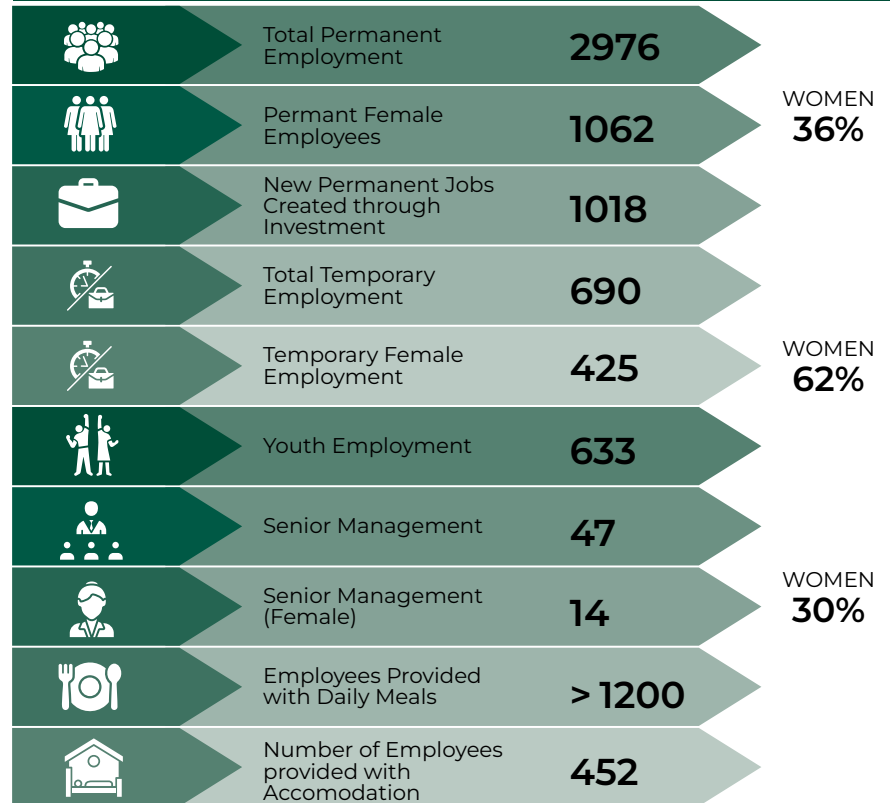
FIPA II Fund Statistics

The FIPA II Fund was launched in 2017 with USD 47.5 million in committed capital. It builds on the foundation laid by our previous investments and targets businesses that contribute to Angola's economic diversification agenda.

DEVELOPMENT INDICATORS



SOCIAL INDICATORS



* Dec 2024 Figures

PORTFOLIO COMPANIES

	Total USD
Total labour expense	55 589 264
Domestic purchases	138 583 434
Corporate income taxes	14 695 806
Other taxes and government fees	21 136 772
Total Taxes and fees (PC)	35 832 578

* Total Fund Figures

Our Impact Framework

At ACP, we measure impact not as a concept, but as a set of tangible, measurable outcomes.

Our Impact Framework enables us to evaluate how each investment contributes to systemic change; whether through financial inclusion, improved access to essential goods, stronger supply chains, or job creation.

This framework is grounded in global standards (IFC, GIIN, FAO, UN) and is designed to align with both the Sustainable Development Goals (SDGs) and Angola's national priorities.



Our Objectives

ACP's impact framework is built to achieve **three core objectives**:

①

Understand the context:

Evaluate the challenges facing communities and baseline conditions before investment.

②

Guide investment responses:

Define targets, indicators, and strategies that reflect the reality on the ground.

③

Measure change:

Assess what has shifted since our intervention, and how it addresses the original development gaps.



The Model in Action

Our Impact Framework tracks four forms of capital and links them to investment themes, outcome indicators, and specific SDGs.

Our Inputs	Investment Themes	Measure Outcomes	SDG Targeted
Financial Capital	Food security, import substitution	Access to products, repeat customers, increased productivity	SDG 1, 2, 8, 12
Human Capital	Job creation, skills development	Number of employees trained, wage growth, gender and youth development	SDG 4, 5, 8
Intellectual Capital	Knowledge sharing, value chain development	Advisory services delivered, adoption of new practices, repeat engagement	SDG 9, 12
Social Capital	Inclusion, infrastructure, gender equity	Reduction in inequality, female representation, improved household wellbeing	SDG 5, 10, 11



Guided by Global Standards

We align our impact approach with the following institutions and frameworks:

- International Finance Corporation (IFC)
- The World Bank
- Food and Agriculture Organization (FAO)
- Global Impact Investing Network (GIIN / IRIS+)


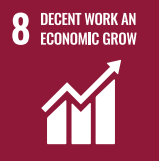








These frameworks help ensure that our evaluation is not only consistent and comparable, but also credible in the eyes of international partners and investors.

Example Indicators (per investment)

- Increase in number of customers or producers served
- Growth in female and youth employment
- Expansion in areas under cultivation
- Growth in repeat customer retention
- Knowledge sharing initiatives completed
- Local sourcing of inputs or services

Our Impact Model

A practical system designed for scale, sustainability, and inclusion

OUR INPUTS	INVESTMENT THEMES	HOW WE MEASURE OUR IMPACT		
		GUIDELINES AND STANDARDS	OUTPUTS AND OUTCOME INDICATORS	IMPACTS - CONTRIBUTING TO SDGS
FINANCIAL CAPITAL	Food security through investment in the Agri and fishing industry	THE WORLD BANK	Increase in access to products <ul style="list-style-type: none"> · Increase in number of customers supplied · Increase in number of female customers supplied · Increase in number of repeat customers 	         
HUMAN CAPITAL	Import substitution through increase in agricultural production	INTERNATIONAL FINANCE CORPORATION	Increase in productivity <ul style="list-style-type: none"> · Increase in number of customers/repeat customers · Increase in areas under cultivation 	
INTELLECTUAL CAPITAL	Waste management through investment in waste management services	FOOD AND AGRICULTURE ORGANIZATION OF THE UNITED NATIONS	Increase in skills <ul style="list-style-type: none"> · Increase in number of people trained 	
SOCIAL CAPITAL	National reconstruction through our investment in building materials.	GLOBAL IMPACT INVESTING NETWORK	Become a knowledge leader <ul style="list-style-type: none"> · Increase in active knowledge sharing · Increase in advisory services provided 	
	Economic diversification through investment beyond the Oil & Gas sector		Reduction in inequality <ul style="list-style-type: none"> · Increase in employee numbers · Increase in employee wages · Increase in female employee wages 	
			Increase in employment <ul style="list-style-type: none"> · Increase in number of employees · Increase in number of female employees · Increase in number of youth employees 	



Agriculture in Africa

Challenges, Opportunities, and the Path to Sustainable Growth

Agriculture is the backbone of Africa's economy, providing employment for nearly 60% of the continent's labour force and contributing approximately 17% to Sub-Saharan Africa's GDP (Statista, 2024). Beyond its economic significance, agriculture is deeply woven into Africa's cultural and social fabric. However, despite its potential, the sector faces persistent challenges, including food insecurity, environmental degradation, and climate change. Addressing these challenges presents an opportunity to transform African agriculture into a sustainable and inclusive economic driver.

Food Security and Agricultural Productivity

Africa's agricultural sector struggles to meet the nutritional demands of its rapidly growing population. As of 2019, an estimated 257 million people in Sub-Saharan Africa were undernourished, with children particularly affected by malnutrition and stunted growth (FAO, 2019). The continent currently spends over \$50 billion annually on food imports (World Bank, 2020), highlighting the urgent need to enhance local food production.

Studies show that strategic investments in agricultural technology and infrastructure could increase productivity by up to 70% (FAO, 2017), improving food security and reducing reliance on imports.

Environmental Sustainability and Climate Change

Agriculture in Africa is increasingly threatened by environmental degradation. An estimated 65% of the continent's arable land is degraded due to deforestation, unsustainable farming practices, and soil erosion (FAO, 2018). The expansion of agricultural land often comes at the cost of deforestation, which contributes to biodiversity loss and further land degradation.

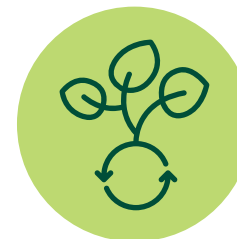
Climate change exacerbates these issues, with shifting weather patterns causing prolonged droughts, unpredictable rainfall, and rising temperatures. These factors reduce crop yields, shorten growing seasons, and increase vulnerability to pests and diseases (IPCC, 2019). Sustainable agricultural practices, such as agroforestry, regenerative farming, and efficient water management, can mitigate these impacts while enhancing long-term productivity.

65%

of the continent's arable land is degraded due to deforestation



AGROFORESTRY



REGENERATIVE FARMING



EFFICIENT WATER MANAGEMENT



“Africa is not without its challenges — but it is rich with potential, resilience, and opportunity. At ACP, we believe in investing where growth truly matters.”
- **Angola Capital Partners**

Job Creation and Economic Growth

Agriculture holds immense potential for job creation, particularly in rural areas where employment opportunities are scarce.

Each year, approximately 12 million young people enter Africa's labour market, yet only a fraction find formal employment (World Bank, 2019). Expanding agricultural opportunities - through agribusiness incubation, mechanisation, and value-added processing, could provide a viable solution to the continent's unemployment crisis.

Additionally, closing the gender gap in agriculture could yield significant benefits. Women comprise nearly 50% of Africa's agricultural workforce yet often lack access to land, credit, and technology (FAO, 2018). Studies suggest that improving women's access to agricultural resources could increase farm yields by 20-30%, reducing global hunger by 100-150 million people (FAO, 2011).





The Role of Technology in Agricultural Transformation

Technological advancements are revolutionising African agriculture by increasing efficiency and reducing risks. Digital tools, such as mobile-based advisory services, precision farming, and remote sensing, provide smallholder farmers with real-time agronomic information. For example, Ethiopia's 8028 Farmer Hotline delivers agricultural advice via mobile technology, supporting millions of farmers who lack internet access. Similarly, digital platforms like Precision Agriculture for Development (PAD) use SMS-based systems to provide customised farming recommendations (World Bank, 2019).

Technological advancements are revolutionising African agriculture by increasing efficiency and reducing risks.

Additionally, blockchain technology is emerging as a game-changer in Africa's agricultural sector by enhancing supply chain transparency, ensuring fair pricing, and improving financial transactions. By providing a secure, tamper-proof digital ledger, blockchain helps farmers gain direct access to buyers, reducing reliance on middlemen and ensuring they receive fair compensation for their produce. It also enables traceability from farm to consumer, building trust in food quality and safety, which is crucial for expanding Africa's agricultural exports (EOS Intelligence, 2024).

Public-Private Partnerships and Policy Support

Sustainable agricultural transformation requires collaboration between governments, private investors, and development organisations. Initiatives such as the Southern Agricultural Growth Corridor of Tanzania (SAGCOT) demonstrate the impact of coordinated investments in tackling agricultural bottlenecks. By aligning policies, financial resources, and infrastructure development, such frameworks create conditions for large-scale agricultural success. The SAGCOT initiative alone is expected to bring 350,000 hectares under production, generate \$1.2 billion in annual revenues, and lift over two million people out of poverty by 2030 (Jenkins, 2012).

Agriculture remains central to Africa's economic and social development. While challenges persist, the sector holds unparalleled opportunities to address food insecurity, create jobs, and promote environmental sustainability. Strategic investments in technology, sustainable practices, and inclusive policies will be crucial in unlocking Africa's agricultural potential. By prioritising innovation, infrastructure, and human capital development, Africa can transition towards a more resilient and prosperous agricultural future.





Did You Know?

Did you know that Africa imports \$50 billion in food annually; despite having 60% of the world's uncultivated arable land?

fazenda
giraSSol



Fazenda Girassol

A Model for Sustainable Agriculture in Angola

Fazenda Girassol is one of Angola's largest Agribusiness players and a flagship investment of FIPA2, a fund managed by Angola Capital Partners. Established with a vision to enhance food security, generate employment, and promote sustainable agricultural practices, the farm has evolved into a model of **resilience and innovation**. By integrating modern agricultural techniques with environmentally responsible practices, Fazenda Girassol not only contributes to Angola's food production but also exemplifies how agribusiness can drive economic growth while prioritising sustainability.

To watch overview of
Fazenda Girassol

History and Expansion

Founded in 2003, Fazenda Girassol began as a small-premium produce agricultural venture in Kikuxi, Luanda, with just 3 hectares of cultivated land.

Over the years, the farm has overcome significant challenges, including infrastructure constraints, economic fluctuations, and logistical hurdles, to expand its footprint.

Today, Fazenda Girassol available land spans over 9,000 hectares, with a significant portion dedicated to sustainable cultivation.

A key milestone in its expansion was the establishment of a 9850-hectare site in Nzeto, Zaire Province, under a 60-year government concession. Despite rapid growth, Fazenda Girassol remains committed to responsible land use, ensuring that vast tracts of native vegetation remain preserved to protect biodiversity.



Production and Diversification

Fazenda Girassol has evolved into a leading producer of fresh bananas, lettuce, and aromatic herbs, supplying both domestic and regional markets. While its diversified production includes a range of vegetables and herbs, the farm's fruit export efforts are focused on high-value crops such as dragon fruit.

Sustainability is embedded in its operations through the use of regenerative farming techniques, including:



NO-TILL FARMING
to preserve soil integrity.



CROP ROTATION AND COVER CROPPING
to enhance soil fertility.



INTEGRATED PEST MANAGEMENT
to reduce reliance on chemical pesticides.



WATER CONSERVATION
through an extensive system of dams and reticulation channels.





Fazenda Girassol's commitment to innovation is evident in its adoption of precision agriculture and digital monitoring tools.

Investment in Technology and Innovation

By leveraging drone technology for crop management and using real-time data analytics, the farm has optimised yields while reducing resource consumption.

Advanced irrigation systems, including the Farmoot monitoring system, have improved water efficiency, ensuring sustainability in a region often challenged by erratic rainfall.

A notable collaboration with African Drone Solutions has enabled detailed mapping and surveying of the farm's regenerative structure, further enhancing its ability to integrate technology with ecological conservation.



Environmental Stewardship

Fazenda Girassol has prioritised environmental sustainability through:



AGROFORESTRY INITIATIVES

integrating native trees with cultivated crops to enhance biodiversity.



WATER CONSERVATION MEASURES

with a plan to create 150 strategically placed ponds and dams to capture and store rainwater. To date, two dams have been constructed, with a third currently underway.



LIVESTOCK INTEGRATION

with rotational sheep grazing used for natural fertilisation and soil management.

Through these initiatives, the farm is setting a benchmark for environmentally responsible agribusiness in Angola.

Social and Economic Impact

Beyond food production, Fazenda Girassol plays a crucial role in fostering economic and social development. Key contributions include:



EMPLOYMENT CREATION

with over 1200 direct jobs and thousands more supported through the supply chain.



WORKER WELFARE PROGRAMS

providing on-site housing, daily meals, and access to clean water for employees.



SKILLS DEVELOPMENT

offering agricultural training and capacity-building programs to enhance workforce expertise.



OUTGROWER PARTNERSHIPS

supporting smallholder farmers by integrating them into the commercial agricultural value chain and providing them with stable market access.





Fazenda Girassol is more than a commercial farm, it is a model for how sustainable agriculture can drive economic resilience, environmental conservation, and social impact. Through a commitment to innovation, responsible land use, and community engagement, the farm is demonstrating the potential of agribusiness to transform Angola's agricultural sector. As it continues to evolve, Fazenda Girassol stands as a beacon of what is possible when investment, sustainability, and development priorities align.

fazenda
Girassol



Measuring What Matters

Fazenda Girassol's Impact Framework

From Ambition to Accountability

Fazenda Girassol's ambition to be a regenerative and socially transformative farm demands more than good intentions; it requires measurable outcomes. To ensure our practices lead to lasting environmental, social, and economic value, we apply a structured framework for evaluating impact.

Guided by Global Best Practice:

Three Frameworks of Influence

This is a tailored framework, developed specifically for Fazenda Girassol, to reflect its operational realities and impact potential. While rooted in global best practice, it is a focused tool designed to support ACP's broader impact framework with deeper relevance and applicability at the farm level.

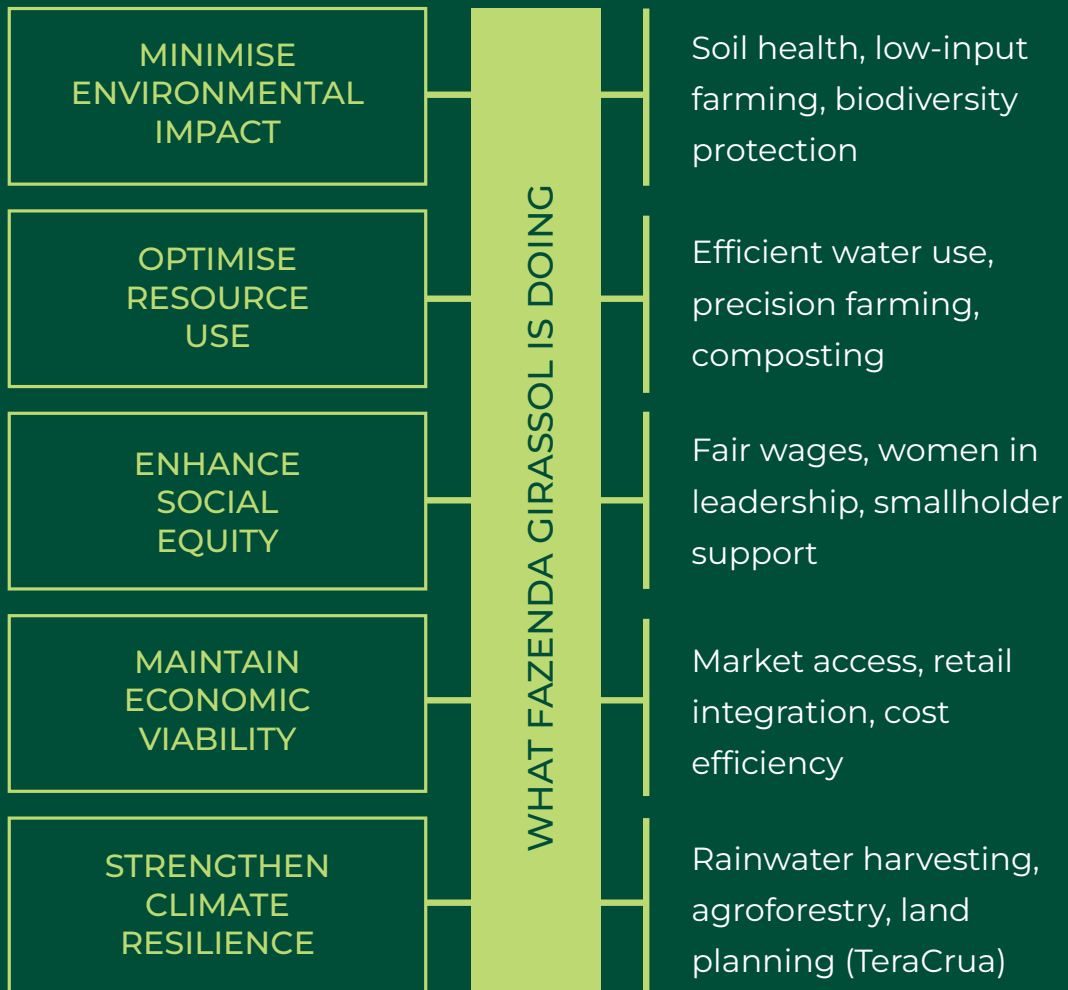
While Fazenda Girassol's impact framework is tailored to the farm's unique context, it is rooted in the principles of three internationally recognised models that define excellence in sustainable agriculture:

Framework	Core Focus	Fazenda Girassol Alignment
IFC Performance Standards	Managing environmental and social risks in investment projects	FG aligns with all 8 IFC standards, including labour practices, resource efficiency, biodiversity conservation, and community health and safety
UN Sustainable Development Goals (SDGs)	Global road map for inclusive and sustainable development	FG contributes to SDGs 2 (Zero Hunger), 6 (Clean Water), 8 (Decent Work), 9 (Industry & Infrastructure), 13 (Climate Action), and 15 (Life on Land)
Sustainable Agricultural Intensification (SAI)	Increasing agricultural productivity while conserving natural resources	FG applies all 5 SAI pillars: minimising environmental impact, optimising resource use, enhancing social equity, maintaining economic viability, and strengthening climate resilience



SAI Framework: The 5 Pillars

The Sustainable Agricultural Intensification (SAI) framework is built around **five key pillars**. Fazenda Girassol integrates all of these into its operations.



IFC Performance Standards

A benchmark for managing environmental and social risk in agribusiness investment. Fazenda Girassol aligns with all eight standards, from labour conditions to biodiversity and community health.

UN Sustainable Development Goals (SDGs)

A global call to action for inclusive and sustainable growth. Fazenda Girassol contributes to SDGs 2 (Zero Hunger), 6 (Clean Water & Sanitation), 8 (Decent Work & Economic Growth), 9 (Industry, Innovation & Infrastructure), 13 (Climate Action), and 15 (Life on Land) through its farming practices, employment creation, and environmental initiatives.

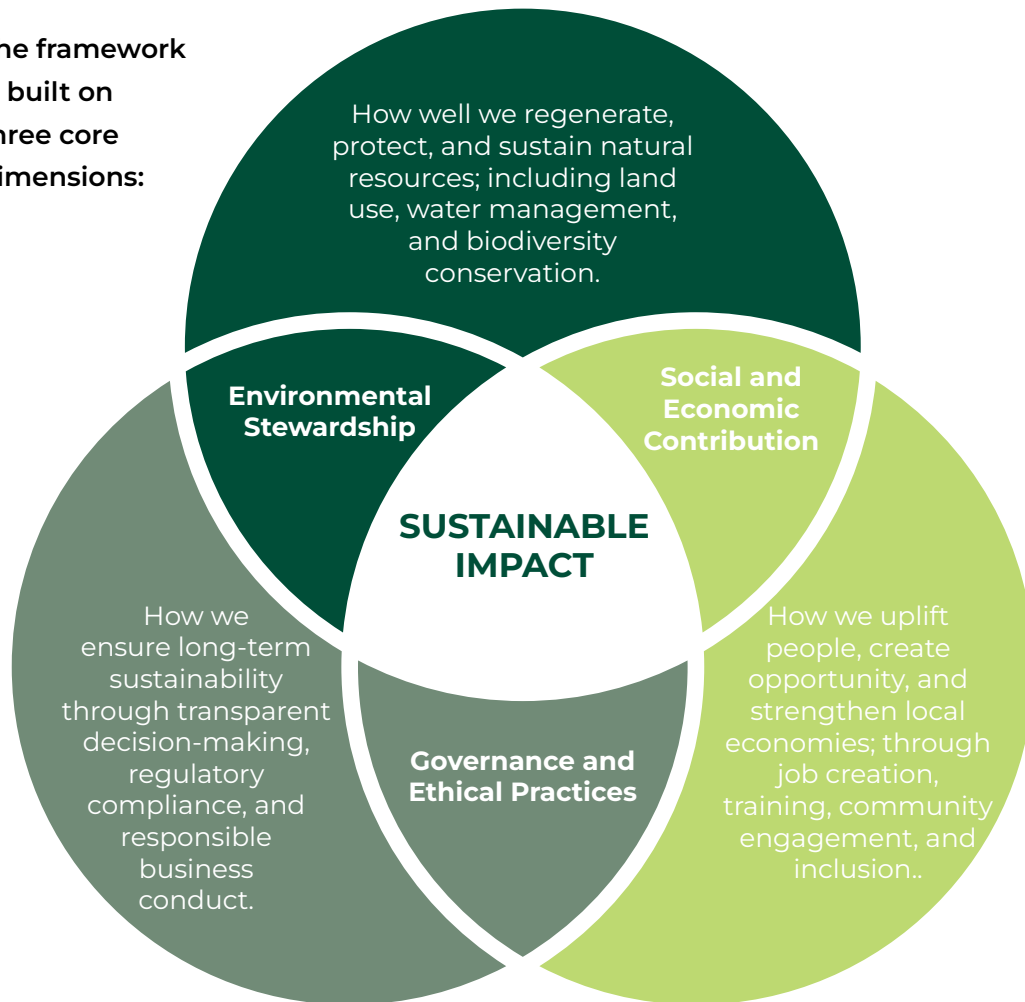
Sustainable Agricultural Intensification (SAI)

A five-pillar approach to increasing agricultural productivity while conserving natural resources. Fazenda Girassol applies this logic to optimise input use, enhance soil health, promote social equity, and build climate resilience; notably through its TeraCrua project to expand water access through strategic dam construction.

Our Custom Lens: The Fazenda Girassol Impact Evaluation Framework

While these global frameworks provide valuable guidance, Angola Capital Partners has developed a custom evaluation framework to assess real-world outcomes on the ground. This integrated lens draws on the principles of IFC, SDGs, and SAI, but is purpose-built to reflect the farm's realities.

The framework is built on three core dimensions:



Putting the Framework to Work

Fazenda Girassol applies this framework through a combination of quantitative data, qualitative insights, and comparative benchmarking.

QUANTITATIVE

- Number of hectares under sustainable cultivation
- Dams constructed to support year-round irrigation
- Volume of compost used and inputs avoided
- Jobs created and supported through the value chain
- Volume of food produced and distributed

QUALITATIVE

- Employee experiences and testimonials
- Community feedback on access to resources, food, and opportunities
- Expert assessments and external validations

BENCHMARKING

- Comparing FG's progress to national agricultural baselines and regional best practices
- Assessing performance against international ESG and sustainability standards

This mixed-methods approach helps identify both achievements and areas for improvement, ensuring that success is measurable, meaningful, and replicable.

A Living Model

This framework is not a checklist; it is a living tool that evolves as the farm grows. It allows Fazenda Girassol to evaluate what's working, refine what's not, and remain accountable to both its values and its stakeholders. As the farm expands its reach and impact, this framework will continue to guide how success is defined and measured.

It is through this lens that we evaluate the specific practices outlined in the next chapter.



fazenda

g

g

Fazenda Girassol in Practice

Turning Principles into Impact

How sustainable agriculture comes to life on the ground

At Fazenda Girassol, sustainability is more than a principle; it's a practice woven into every decision, every hectare, and every relationship. From the ground up, the farm has been built with intention: to regenerate the land, empower people, and cultivate long-term value.

What follows is a detailed exploration of the farms most meaningful practices; the tangible ways in which it applies regenerative agriculture, uplifts communities, and embeds ethical governance. These are not isolated projects or pilot ideas; they are carefully integrated systems, refined over time, and scaled with care.

Whether its rotating sheep to close nutrient loops, building water retention systems for a drier future, or investing in women's training programmes, the focus remains the same: to build a resilient agricultural model that works with nature, for people, and over time.

Each initiative is evidence of what's possible when good strategy meets hard work, local knowledge, and long-term thinking. Together, they form a living system; dynamic, responsive, and constantly improving.

A.

Regenerating Nature



Working with ecosystems, not against them



Grazing with Purpose: Integrating Sheep for Soil Health and Sustainability



In conventional agriculture, livestock and crops are often separated - viewed as distinct systems with separate management. But at Fazenda Girassol, integration is intentional and strategic. The farm's rotational grazing program with over 6,000 sheep is not only a practical solution to managing plantation undergrowth, but also a cornerstone of its regenerative model.

Why It Matters

Rotational grazing mimics natural ecosystem cycles, where animals contribute to land restoration rather than degradation. In regenerative systems, livestock are not passive consumers; they are active agents of soil renewal, weed control, and nutrient cycling.

At Fazenda Girassol, sheep graze between banana and fruit tree rows in a carefully planned sequence. Their manure introduces organic nitrogen and microbial life, improving soil fertility. Their hooves gently break soil compaction, enhancing aeration and water infiltration, and because the rotation is timed with rainfall and plant development, the land is given periods to rest and recover, preventing overgrazing and allowing for regrowth.

This approach follows the principles of Holistic Planned Grazing, as pioneered by Allan Savory, adapted for plantation contexts in tropical regions. By rotating blocks based on observed ground cover, rainfall trends, and sheep density, the team ensures a closed-loop system where animals, plants, and microbes reinforce each other.

Implementation at Fazenda Girassol



Dedicated grazing schedules are managed for each block, supported by rainfall data and visual monitoring.



Livestock routes were planned in partnership with Terra Cua to align with land contours, reducing erosion risk.



Temporary fencing and natural hedging guide the flock while protecting young trees and recovering plots.



Sheep are overseen by a trained team, many from local communities, combining traditional herding knowledge with ecological monitoring.

Environmental and Economic Impacts

70% less herbicide used in grazed blocks, lowering chemical dependency and input costs.

A **0.6% increase in soil organic matter** in pilot zones within just 12 months; boosting fertility and water retention.

Lowered operational costs through reduced need for mechanical weeding and chemical spraying.

In long-term soil monitoring studies across similar tropical agroecosystems, an increase in soil organic matter of just 1% can lead to up to 25,000 litres of additional water retention per hectare; improving drought resilience, crop quality, and microbial biodiversity.



“Where machines compact and deplete, the sheep regenerate.”

- Farm Manager,
Fazenda Girassol

Strategic Alignment:



Environmental Stewardship:

Replaces synthetic inputs, improves soil structure, enhances biodiversity.



Social & Economic:

Employs trained herders, builds local animal husbandry capacity.



Governance:

Demonstrates scalable regenerative planning, integrated into farm's monitoring system.

Building Water Resilience: Strategic Design for a Drier Future



Water is one of the most limiting factors in Angolan agriculture. With rainfall patterns increasingly erratic due to climate change, many farms rely on expensive, inefficient irrigation systems, or risk total production losses during dry months. At Fazenda Girassol, water security is not treated as a reactive necessity, it's a core pillar of resilience planning, built into the landscape itself.

Why It Matters

Rainfall in the region is both seasonal and unpredictable. Without proper water capture and storage, most of it runs off the land, causing erosion and bypassing the roots of the very crops it's meant to nourish. In conventional systems, this runoff is a loss, but at Fazenda Girassol, it has been transformed into an asset thanks to a ground breaking collaboration with Terra Crua Design.

1. Designing with the Land: The Terra Crua Approach

In 2022, Fazenda Girassol partnered with Terra Crua Design, a Portuguese regenerative land-use consultancy, to reimagine the farms water systems. Using aerial drone mapping, satellite imagery, and hands-on surveying, Terra Crua developed a holistic water retention and management strategy tailored to the farm's topography.

This design serves multiple purposes at once: capturing water, protecting topsoil, improving infiltration, and laying the foundation for climate resilience across thousands of hectares.

Key elements of the design include:



Strategically placed earth dams and catchment ponds that follow the lands contours - slowing, spreading, and storing rainfall across the landscape.



A network of gravitational flow channels and swales, directing water to where it is needed most and preventing erosion in vulnerable zones.



Priority roads and tracks repositioned along contours to prevent rainwater from accelerating downhill, a common cause of rill and gully erosion in conventional farm layouts.

“If you work with the land, not against it, the landscape will harvest water for you.”

- Terra Crua Consultant,
FG Design Projectte.



Implementation to Date

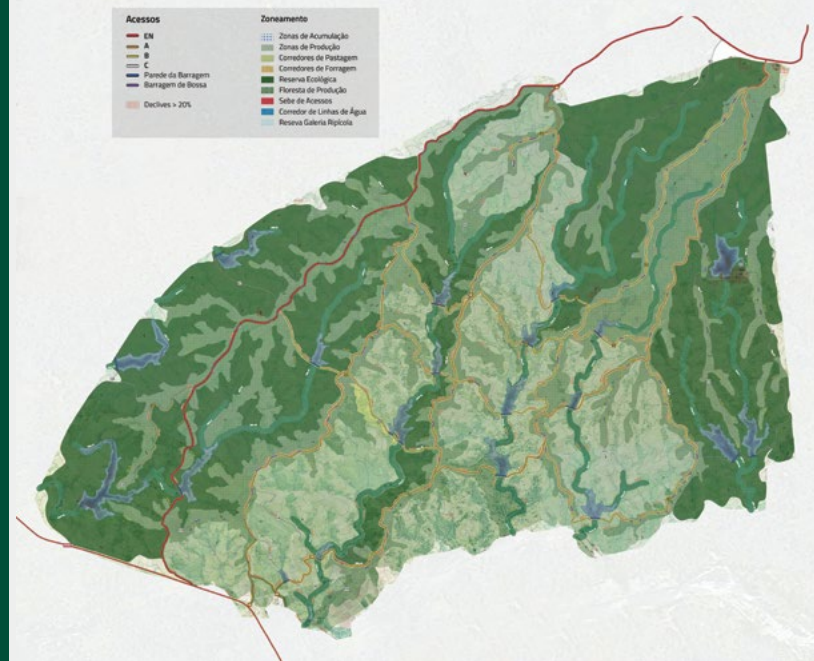
2 large dams completed, with a third under construction, capturing rainwater for both irrigation and livestock.

Hundreds of meters of contour-aligned road and internal access paths completed, drastically reducing water runoff during heavy storms.

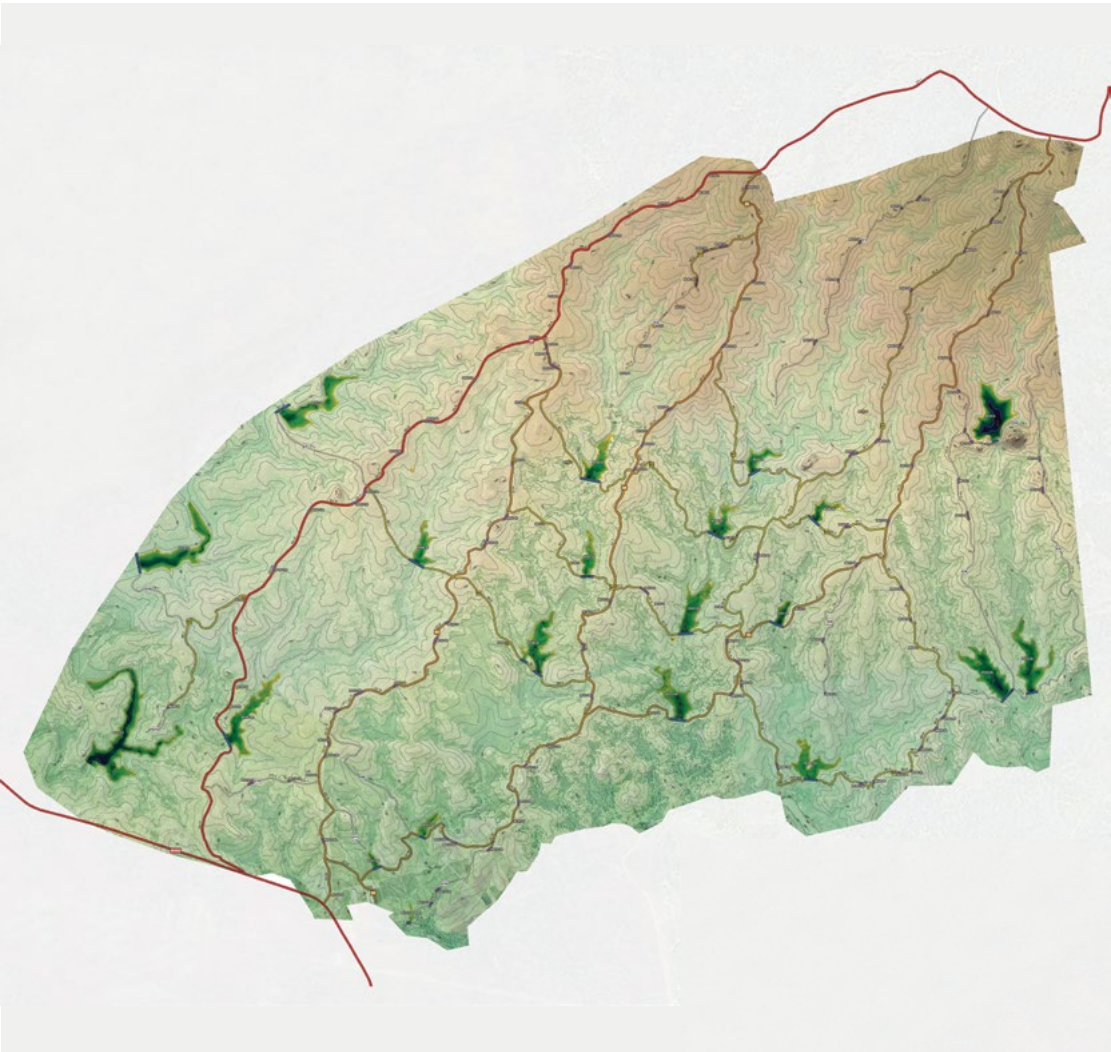
The system is designed to **support up to 150 water retention points** over time; building a long-term sponge-like system across the farm.

FAZENDA GIRASSOL LAND USE ZONING PLAN

Mapping of functional areas to guide production, conservation, water access, and infrastructure development across the farm.

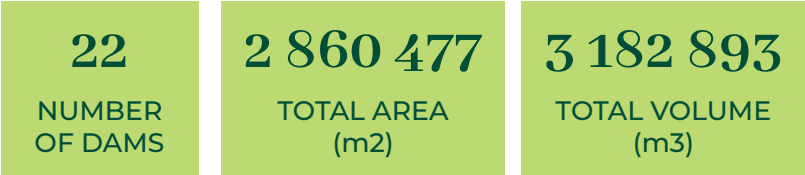


Access and Water Infrastructure Plan



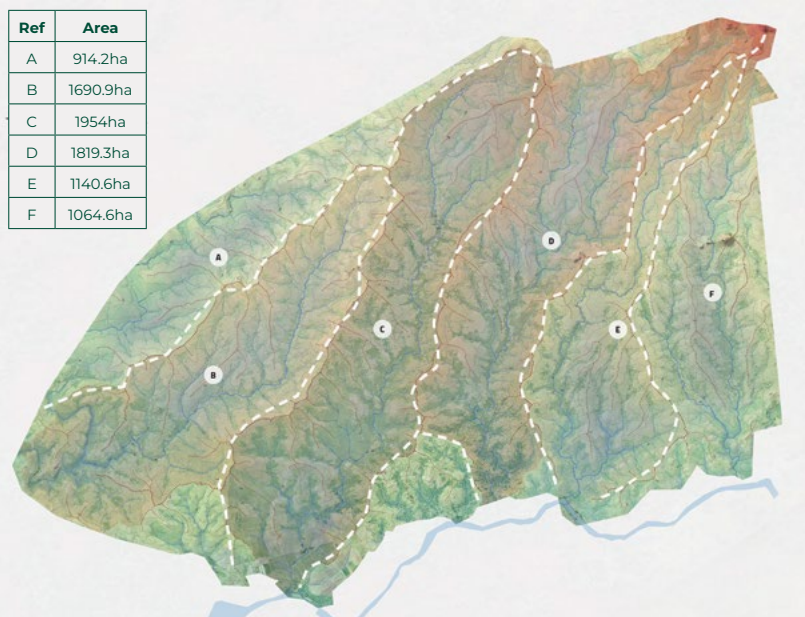
Developed by Terra Crua using elevation and hydrological mapping, this infrastructure plan guides the strategic placement of dams, roads, and catchments across Fazenda Girassol — supporting soil conservation, irrigation, and year-round access.

PLANNED NATURAL DAMS TO BE CONSTRUCTED



HYDROGRAPHIC BASINS

These refer to the geographical areas where all rainfall and surface water drain to a common outlet (such as a river, dam, or lake). In the context of the map, it shows the natural water catchment zones that guide how water moves across the landscape — critical for planning dams, drainage, and erosion control.



2. Irrigation Systems: Precision, Not Pressure

Beyond storage, the delivery of water has also evolved. Fazenda Girassol has introduced drip irrigation networks in key production zones, significantly reducing water loss from evaporation and overspray. Integrated with Farmoot monitoring tools, this system helps optimise timing and volume, bringing water exactly where and when it is needed.

Impacts

Increased water security across high-production zones, including in dry-season cropping areas.

Less water use per hectare, thanks to precision irrigation and improved soil infiltration.

More system resilience with less dependence on pumps, electricity, and external water sources.

A decreased erosion risk, protecting topsoil and the farms long-term productivity.

Strategic Alignment:



Environmental Stewardship:

Watershed protection, erosion control, soil health



Governance & Infrastructure:

Long-term capital planning with regenerative design



Community Resilience:

Reliable water availability for labour-intensive production, even in dry seasons



Feeding the Soil: Organic Fertiliser and Composting Systems



In regenerative agriculture, soil is not a medium, it's a living ecosystem. The health of the soil determines the health of the plants, the nutrition of the produce, and the resilience of the entire farming system.

At Fazenda Girassol, healthy soil is a strategic asset. Rather than rely on synthetic fertilisers, which can degrade soil structure over time and contribute to runoff pollution, the farm has developed a robust composting program that turns on-site organic waste into nutrient-rich fertiliser.

How It Works: Closing the Loop

Every day, tonnes of organic material are collected from across the farm:

- **Banana leaves and stems from post-harvest processing**
- **Pruning materials from fruit trees and hedgerows**
- **Sheep manure from rotational grazing**
- **Crop residues from field clearance**
- **Weed biomass from hand-removal or grazing cleanup**

These inputs are layered in windrows or piles and undergo a controlled decomposition process. The farm manages temperature, moisture, and oxygen exposure to accelerate the breakdown of organic matter into stable humus - a form of compost rich in beneficial microbes, enzymes, and slow-release nutrients.

In many African farming systems, organic material is often burned or discarded due to lack of processing capacity. At Fazenda Girassol, this waste is transformed into value, returning to the soil as a life-giving amendment.

Why It Matters

Compost improves soil structure, helping it retain water during dry spells and drain properly during floods.

It feeds microbial life, which drives nutrient cycling and improves disease resistance in crops.

It increases soil organic matter (SOM), a key metric of soil health. A 1% increase in SOM can store 20,000 - 30,000 litres of water per hectare and reduce the need for irrigation and fertiliser inputs.

Unlike synthetic fertilisers, compost also buffers pH, enhances cation exchange capacity (CEC), and **adds long-term resilience** rather than short-term boosts.

Implementation at Fazenda Girassol

Compost is applied primarily in the banana plantations, where high biomass output and frequent harvesting create an ongoing need for nutrient replenishment. These zones benefit most from organic matter that supports soil structure, microbial activity, and long-term fertility.

Building on this foundation, trials are now expanding into herb beds and fruit orchards, especially in areas where irrigation systems can maintain the moisture levels needed for microbial life to thrive. Plans are also underway to pilot biofertiliser production, including the use of fermented compost teas and nutrient-rich leachates designed to enhance root-zone health and boost soil biodiversity.

Impacts

Increased soil organic matter and moisture retention in key crop zones

Less waste sent to landfill or burned - fully utilised in on-farm nutrient cycling

Less dependence on imported synthetic fertilisers, reducing cost and emissions

More soil microbiome diversity, supporting pest and disease resilience



“You can see the difference in the ground; where compost goes, the plants respond.”

- Field Supervisor, Banana Section, Fazenda Girassol



Strategic Alignment:



Environmental Stewardship:
Soil restoration, nutrient cycling, carbon storage



Social Impact:
Job creation in compost management, skills transfer in soil fertility practices



Governance:
On-farm risk mitigation and climate-smart fertiliser strategy

Letting Nature Pollinate: Bee Colonies and Biodiversity Corridors



“You know your farm is healthy when the bees come back.”

- Lead Agronomist, Fazenda Girassol

Pollinators are silent workers behind much of the food we eat, responsible for the health and productivity of crops like **bananas, papayas, avocados, and passionfruit**. Globally, over 75% of food crops depend to some extent on pollination, yet pollinators are increasingly at risk from habitat loss, chemical exposure, and climate disruption.

At Fazenda Girassol, bees are not treated as an afterthought. Beekeeping is a core component of the farm's biodiversity strategy, woven into its regenerative design and agroecological philosophy.

A Living Pollination Network

Dozens of bee colonies are maintained in purposefully selected locations across the farm, positioned close to high-dependency crops and wild margins. These hives are managed by trained local staff and supported by a habitat enhancement programme that includes:

- **Native flowering plants planted at the edges of plantations**
- **Hedgerows and corridor species that bloom across seasons**
- **Minimal pesticide zones to ensure pollinator safety and survival**

This approach creates a pollination corridor, a continuous ecological network that supports not only bees but butterflies, beetles, and other beneficial insects vital to ecological balance.

More Than Pollination: Why This Matters

BOOSTS YIELDS & CROP QUALITY:

In crops like passionfruit, proper pollination leads to fuller fruit sets, better shape, and higher uniformity; crucial for commercial viability.

REDUCES LABOUR COSTS:

With bees in action, there's less need for manual pollination, a time-consuming process still used on some farms.

IMPROVES ECOSYSTEM HEALTH:

The presence of wild pollinators is an indicator species for ecological health. Their return signals a thriving, functioning habitat.



**And its not just about productivity;
pollinator conservation helps rebuild the
resilience of the farm's entire food web,
from microbes to birds.**

Impacts

Higher yields in pollinator-dependent crops (e.g., passionfruit, papaya)

Less labour input in hand-pollinated crops

Increased diversity and population of native bees and insects observed in wild corridors

More habitat complexity at farm edges and buffer zones

**Strategic
Alignment:**



Environmental Stewardship:

Supports biodiversity, natural ecosystems, and resilient agroecology



Social & Economic:

Skills training in beekeeping and potential for honey production and future enterprise



Governance:

Integration of biodiversity into long-term planning and ESG performance

Low-Impact Transport: Moving with Less to Do More



In most commercial farming operations, moving harvested crops from the field to the packhouse is handled by tractors or trucks. But at Fazenda Girassol, not all transport needs horsepower, some are better served by hooves.

As part of its commitment to low-impact, regenerative farming, FG has reintroduced animal-powered logistics, using horses and donkeys to convey harvested bananas and other fruits directly from the plantation to the packhouses. This decision is not about tradition, it's a strategic, sustainability-first solution, carefully designed to minimise fuel use, protect soil health, and ensure operational efficiency.

Why It Matters

Heavy transport machinery causes soil compaction, particularly in tropical conditions, the compacted soil in turn reduces water absorption and root health, affecting both crop performance and long-term land productivity.

By using horses and donkeys to move produce, Fazenda Girassol avoids these negative impacts while ensuring reliable short-distance hauling, especially in areas where terrain or wet conditions make vehicle access risky or damaging.

But at Fazenda Girassol, animal use is only acceptable when done ethically. That's why the transport programme is built on strict animal welfare standards.

How It Works at Fazenda Girassol

Donkeys and horses are used exclusively to transport harvested crops from the plantation to packhouses.

Animals are assigned appropriate daily routes and rested regularly to avoid fatigue.

Custom-designed saddlebags and harness systems ensure weight is balanced and doesn't cause injury or strain.

Each animal is cared for by a dedicated handler, trained in daily health checks, hydration, grooming, and nutrition.

Animal well-being is reviewed as part of the farms routine operational audits, in line with regenerative agricultures principles of care for all living systems. The system isn't just efficient - its ethical, cost-effective, and ecologically sound.



Impacts

- Less fuel consumption and internal emissions
- A decrease in soil compaction, maintaining fertility and drainage
- Higher produce quality, through gentler, bruise-free handling
- Increased animal health and working conditions, meeting internal welfare standards
- More operational flexibility in wet or erosion-prone zones

“When the animals are healthy, the system works. Their well-being is as important as their contribution.”

**- Donkey Team Supervisor,
Fazenda Girassol**

**Strategic
Alignment:**



Environmental Stewardship:

Protects soil and reduces carbon footprint



Social Contribution:

Supports safer working environments and animal care skills



Governance:

Aligns with ethical supply chain and regenerative certification standards

Care Beyond the Field: Fazenda Girassol's Animal Health Clinic



Fazenda Girassol's commitment to animal welfare doesn't stop at the paddock. The farm maintains a dedicated on-site animal clinic, providing preventive and emergency care to its over 6,000 sheep, horses, and donkeys.

- **Staffed by a trained veterinary team, the clinic conducts:**
- **Regular health checks and vaccinations**
- **Injury treatment and hoof care**
- **Nutritional support programmes**
- **Monitoring for zoonotic disease risk (especially in herd animals)**

This infrastructure is rare in most agricultural settings and reflects Fazenda Girassol's belief that animals should be treated as partners in regeneration, not just resources.

Precision Agriculture: Data-Driven, Resource- Smart Farming



At Fazenda Girassol, technology is not used for novelty, it's used for efficiency, sustainability, and decision-making. Precision agriculture is the cornerstone of the farms strategy to reduce waste, improve productivity, and respond to the challenges of scale, water scarcity, and climate variability.

From drones in the sky to water lines in the soil, every intervention is guided by one principle: apply the right input, in the right place, at the right time, and only where needed.

1. Flying Smarter: Building Internal Capacity with Drone Technology

At Fazenda Girassol, technology isn't an external service, it's an in-house skillset. The farm has built a fully internal drone programme, operated by trained staff from the local community, making drone technology a daily tool, not a specialist exception.

By investing in people, not just equipment, Fazenda Girassol has established a model where drone operations are fully integrated into the farms systems; from scouting to spraying. This has created skilled jobs, improved decision-making, and elevated sustainability outcomes.

What the Drones Do

Fazenda Girassol uses the DJI AGRAS platform for two core tasks:

1. MONITORING AND MAPPING

Drones are flown weekly across plantation blocks to:



Produce topographic maps for planning



Generate NDVI imagery to detect plant stress early



Monitor canopy density and growth patterns



Assist agronomists with prioritising field visits and identifying problem zones

All insights are reviewed in weekly agronomy meetings and inform decisions around input planning, harvest sequencing, and irrigation scheduling.

2. FULL-FIELD SPRAYING

Fazenda Girassol uses drones to apply fertilisers, foliar nutrients, and biological pest control products across entire blocks.

This approach replaces traditional tractor-based spraying and brings multiple advantages:

Even coverage, including difficult terrain or dense planting

Lower fuel and labour requirements

No soil compaction, as drones fly above the canopy

Faster application, enabling timely response to field needs

Reduced operator exposure, with pilots safely out of the spray zone

Built by the Team, for the Farm

Rather than outsourcing, the farm has trained internal drone operators, developing a skilled, tech-literate workforce on site. Staff have been trained in:

- Drone piloting and flight path planning
- Data interpretation (NDVI and visual overlays)
- Spray calibration and drone maintenance
- Compliance with UAV safety regulations

This approach ensures that drone work isn't just available; it's reliable, repeatable, and continuously improving.

Impacts

Higher internal tech capacity, with skilled jobs created locally

Decreased chemical input waste, through timely and even application

Better field visibility, enabling earlier interventions and smarter planning

Less soil compaction and operational emissions

Strategic Alignment:



Environmental Stewardship:

Reduces soil damage and overapplication



Social Contribution:

Builds long-term internal capabilities and skilled careers



Governance & Innovation:

Integrates drone data into field management, ensuring traceability and tech-driven planning

2. Watering with Precision: Smart Irrigation and Drip Systems

At Fazenda Girassol, water is managed with the same precision as any other vital input, guided by data, designed for conservation, and delivered with care.

Across the farm, soil moisture sensors and weather forecasting tools are used to monitor changing conditions in real time. This allows the team to determine exactly when and how much water is needed - crop by crop, zone by zone.



System Highlights:



Soil moisture sensors placed across blocks continuously track hydration levels



Forecasting models predict upcoming weather, adjusting irrigation plans proactively



Drip lines in greenhouses apply water slowly and evenly, tailored to each crop's stage and soil type



All data is reviewed by the farm's agronomy team, enabling responsive, informed decisions

Greenhouse Efficiency: Drip Technology in Action

In Fazenda Girassol's greenhouse production zones, drip feed irrigation systems are used to deliver just enough water directly to the root zone, no flooding, no overspray, and no guesswork.

This targeted approach ensures:

- Minimal evaporation loss
- More consistent plant growth
- Lower water consumption, especially in the dry season



Impacts

Lower water use per hectare, with no sacrifice in crop performance

Higher yield consistency, especially in controlled environments like greenhouses

Less energy and labour use, with fewer pumping cycles and manual checks

Better readiness for future integration with drone and soil health platforms

Strategic Alignment:



Environmental Stewardship:

Smart use of a limited resource



Operational Innovation:

Builds tech-enabled irrigation management



Governance & Data Use:

Ties water usage to real-time environmental conditions



3. Farming by Micro-Zone: Smarter Decisions, Better Results

At Fazenda Girassol, the era of treating fields as uniform blankets is over. In its place is a new approach: zone-based decision-making; where each area of the farm is managed based on its unique soil profile, crop performance, and environmental conditions.

The farm is divided into micro-zones or blocks, each of which is observed, measured, and managed individually. These zones are shaped using a combination of:

- **Drone-collected NDVI imagery**
- **Soil test results and nutrient maps**
- **Historical yield patterns**
- **Observational feedback from field staff and agronomists**

How It Works in Practice

1

Each micro-zone is managed with a tailored plan that includes:

2

Custom irrigation scheduling, based on sensor and forecast data

3

Block-specific input application, for fertilisers and foliar sprays

4

Adjusted harvesting timelines, depending on crop maturity profiles

This granular approach increases not just productivity, but also input efficiency, quality control, and environmental performance.

Benefits of Zone-Based Management



Higher yield consistency, by responding to the real needs of each area



Decreased input overuse, reducing both cost and environmental impact



More precision in labour planning, as harvest and maintenance can be staggered



Higher traceability, with block-level data tracked over seasons

Strategic Alignment:



Environmental Stewardship:

Avoids blanket treatments and chemical overuse



Social Contribution:

Enables smarter use of labour, inputs, and time



Governance & Innovation:

Builds a traceable, data-driven farm model with long-term insight

Capturing Carbon, Creating Value: Exploring Carbon Credits at Fazenda Girassol



As global attention shifts toward climate-positive agriculture, Fazenda Girassol is exploring how its regenerative practices may qualify for carbon credit certification; not as a new idea, but as a natural extension of what the farm is already doing.

In partnership with external specialists, Fazenda Girassol has initiated a carbon credit feasibility study to assess the potential of its farming system to generate verified carbon credits through:



Soil carbon sequestration, driven by composting, mulching, and reduced synthetic fertiliser use



Agroforestry and tree planting, especially through the Terra Crua water and reforestation plan



Rotational grazing, which contributes to improved soil health and carbon retention



Lower-emission logistics, such as animal-powered transport and solar systems

If successful, this programme could unlock a new source of long-term, climate-aligned revenue for the farm, and potentially for smallholders participating in the Outgrower Programme.

Fazenda Girassol sees carbon credits not as a starting point, but as recognition for work already underway.

Action Without Incentive

While the carbon credit study is promising, FGs strategy does not hinge on monetisation. The farm continues to:

Expand tree planting and agroforestry systems

Invest in compost and regenerative soil management

Pursue water retention and erosion control through land contouring

These practices are pursued because they're right for the land, the people, and the future; regardless of whether carbon revenue becomes available.

Strategic Alignment:



Environmental Stewardship:
Nature-based solutions embedded into land use



Governance and Innovation:
Exploring market mechanisms to reinforce impact



Resilience and Future Value:
Potential for new income without dependency



B.

Empowering People



Investing in people
to build a stronger,
more resilient future



Behind every field harvested and every banana shipped is a person - someone building a life, a skill, a family. At Fazenda Girassol, the belief is simple: when people thrive, the farm thrives. From job creation to housing, training to transport, the farm has become an anchor for opportunity in the communities around it.

This section explores the systems that support workers, develop skills, and contribute to broader economic upliftment; not as charity, but as strategy.

More Than a Job: Creating Work, Stability, and Upliftment



“This job changed things for my family. Its not just about income; it’s about dignity.”

- Joo, Irrigation Supervisor

In a country where youth unemployment remains high and rural job opportunities are scarce, employment on a farm like Fazenda Girassol offers more than a payslip; it offers a future.

Today, over 1,200 people are directly employed by the farm, with thousands more indirectly supported through its value chain, including transport providers, input suppliers, and market vendors. Roughly 70% of employees hold full-time positions, with access to benefits and stability that is rare in Angola’s agricultural sector.

Fair wages exceed industry benchmarks, and contracts are formalised; giving workers the security they need to plan for the future. Just as importantly, the farm prioritises hiring from surrounding communities, ensuring that its growth directly uplifts the regions around it.

Impacts

1,200+ direct jobs created

Thousands more supported through informal and formal supply chain work

Majority of workers employed from nearby towns and villages

Wages exceed industry benchmarks, supporting food security and family stability

Strategic Alignment:



Social Contribution:
Job creation and income generation in rural Angola



Economic Development:
Strengthens local economies through stable employment



Governance:
Formalisation of employment, fair labour standards, and workforce inclusion

Pathways to Progress: Training, Growth, and Gender Inclusion



“Fazenda Girassol gave me the opportunity to train as a tractor operator. Now, I’m leading a team in farm operations.”

- Veronica Aurora, Employee

In many agricultural contexts, women are confined to low-wage or support roles. At Fazenda Girassol, that’s changing - by design. The farm has made a deliberate commitment to gender inclusion, with a growing number of women now:

- **Operating tractors and other farm vehicles**
- **Supervising harvest and planting crews**
- **Leading quality control processes in packhouses**

This shift doesn’t just transform the workplace; it transforms household dynamics, challenges social expectations, and opens doors for the next generation of women.

Impacts

- Dozens of women trained in machinery and field management
- Clear internal promotion pathways established and tracked
- Increased female leadership in both field and packhouse teams
- Growing pride and self-confidence among workers; men and women; who feel their careers have real trajectory

Strategic
Alignment:



Social Development:
Women’s empowerment, skill-
building, and household resilience



Inclusive Growth:
Unlocking underused
talent in rural areas



Governance:
Demonstrates equity in hiring,
training, and promotion practices

A Community on Site: Housing, Nutrition, and Everyday Support



At Fazenda Girassol, the work doesn't stop at the field, and neither does the care. The farm has taken a holistic approach to building a community-centred, self-contained environment, designed to support not only productivity, but also dignity, safety, and quality of life.

From housing and daily meals to healthcare and transport, the farm ensures that workers are not just employed, they are looked after.

Safe, Dignified On-Site Housing

Fazenda Girassol provides accommodation for over 900 employees, with 452 rooms arranged in clean, well-maintained blocks. These aren't just sleeping quarters - they are shared living spaces where workers can rest, socialise, and build community.

Rooms are allocated based on team structure and seasonal needs. Dedicated staff maintain shared facilities, ensuring that everyone benefits from a safe, hygienic, and respectful living environment.

Food, Water, and Wellness

Every worker at Fazenda Girassol receives two cooked meals per day, prepared on-site in a professionally managed kitchen. These meals are designed to meet the nutritional demands of an active workforce, reducing food insecurity and improving performance in the field.

All employees - both residents and non-residents; have unlimited access to clean drinking water throughout the day. Beyond the workforce, water access is also extended to nearby clinics and partner community sites, amplifying the farms health impact.

A small on-site medical clinic provides first aid and basic healthcare services for minor injuries, illness, and occupational issues; reducing lost work time and improving peace of mind for workers and their families.

Transport for Access and Inclusion

Not every team member lives on site. Many come from villages or peri-urban settlements where transport is unreliable or unaffordable. To bridge this gap, FG operates a daily transport system, using buses and farm vehicles on pre-set routes to:

- Ensure safe, consistent access to the farm
- Reduce absenteeism and lateness
- Improve worker morale and retention
- Provide safer commuting, particularly for women and younger workers
- Supporting Families and Household Well-Being

Many employees at Fazenda Girassol are primary breadwinners for large, multigenerational households. The farms support model; through stable jobs, meals, housing, and transport; indirectly impacts thousands more lives across the region.

ADDITIONAL INITIATIVES INCLUDE:

- Seasonal produce packs shared with employees and their families
- Water access for off-site community members
- School supply donations in neighbouring villages

Fazenda Girassol's approach shows that productivity and care are not opposites; they are intertwined.

By creating a supportive environment for its people, the farm has built something more than a workplace. It has built a community.

Impacts

- 452 residential rooms, serving 900+ workers
- Daily meals and clean water provided to all staff
- Healthcare access via on-site medical clinic
- Transport routes for non-resident workers across surrounding areas
- Community benefit through shared water and seasonal produce distribution

Strategic
Alignment:



Social Responsibility:
Worker well-being as a foundation for inclusive growth



Health and Resilience:
Better-fed, better-rested, and better-supported teams



Governance and ESG:
Meeting ethical labour standards with real infrastructure and consistent care



Market Impact: Strengthening the Local Economy

Beyond its direct employees, Fazenda Girassol's operations create wider economic knock-on effects. The farm sources materials, supplies, and services from local providers whenever possible; from diesel and packaging to vehicle repair and construction materials.

Smallholder farmers connected to the Outgrower Programme gain stable markets, technical support, and regular income, helping shift their operations from subsistence to sustainability.

Local vendors, transporters, and informal traders benefit from the steady economic activity around the farm, creating an expanding ring of shared growth.

©

Embedding Ethical Governance



A responsible farm is a resilient farm



Good governance is not just about compliance, it's about integrity, transparency, and long-term thinking. Fazenda Girassol applies these principles to every part of its business, from how it manages environmental risks to how it tracks its supply chain.

The farm has embedded structures and systems that ensure decisions are made ethically and that stakeholders; including workers, communities, and investors remain informed and respected.

GLOBALG.A.P and ESG Certification Standards

Fazenda Girassol operates under Angola Capital Partners' ESG policy and aligns with global frameworks such as the IFC Performance Standards and GLOBALG.A.P. These frameworks guide practices in everything from food safety and labour rights to biodiversity protection and land use.

Internal systems ensure ongoing review and adherence, and regular audits are conducted to confirm compliance with evolving global and national standards.

Supply Chain Transparency and Digital Tracking

The farm is investing in digital tools and blockchain-inspired systems to track produce across its supply chain; from field to packhouse to market. This improves quality control, traceability, and trust with commercial buyers.

These systems are also being extended to the Outgrower Programme to ensure smallholder farmers are included in the formal value chain, giving them visibility and accountability.

Climate and Market Resilience Planning

As climate volatility increases, Fazenda Girassol is planning for long-term resilience. The Tera Crua-designed land plan addresses water retention, fire risk, and soil degradation, while economic strategies are being developed to buffer against input price shocks and market fluctuations.


The result is a business that can withstand disruption without compromising its values or vision.

The practices detailed here are not side projects or green add-ons; they are core to how Fazenda Girassol operates. From the way sheep are rotated to the way workers are trained, everything is designed to create lasting value for people, nature, and the business itself.



This is what sustainable agriculture looks like when it's done with intention, integrity, and local knowledge.



A large field of banana plants under a sunset sky. The plants are lush green and fill the foreground and middle ground. The sky is a mix of orange, yellow, and blue, with some clouds. The overall scene is peaceful and agricultural.

Fazenda Girassol is not just responding to challenges, it is reimagining what commercial farming can be. Every practice described in these pages reflects a deliberate commitment to doing things differently: building resilience through nature, investing in people with purpose, and holding itself accountable to the highest standards of governance. This is agriculture with intention, rooted in the realities of Angola, but reaching toward a global standard. As the farm continues to evolve, this example offers more than lessons, it offers a roadmap for a more sustainable, inclusive, and prosperous agricultural future.

fazenda
Girassol



Empowering Smallholder Farmers

Fazenda Girassol's Outgrower Programme

Supporting Growth from the Ground Up: Empowering Smallholder Farmers in Angola

The Promise and Pitfalls of Investing in Smallholder Agriculture

Across the African continent, smallholder farmers are frequently celebrated as the cornerstone of rural development, food security, and inclusive economic growth. Responsible for producing up to 80% of Africa's food supply, they are central to strategies developed by governments, investors, and development agencies aiming to reduce poverty and catalyse transformation across agricultural value chains.

However, while the potential of smallholder agriculture is undisputed, realising that potential remains deeply challenging. Many high-profile interventions have struggled to deliver long-term, scalable results. The literature reveals a common thread: **failure often stems from investing in the farmer without investing in the system that surrounds them.**



Why Well-Intentioned Investments Often Fall Short

Despite significant funding and policy focus, many smallholder support initiatives have underperformed.

ACCORDING TO RESEARCH BY KIT AND FAO, THE REASONS ARE RECURRING AND STRUCTURAL:

- 1 FRAGMENTED SUPPORT**

Even with millions of dollars spent on farmer training programmes and providing inputs, many schemes have proven to be unsustainable. *(KIT/FAO, Smallholder Outgrower Schemes: Principles of Success Smallholder Outgrower S)*

Without investments in infrastructure, market access, and aggregation, training alone has little effect. Farmers may grow more; but without a buyer, storage, or transport, the value is lost.
- 2 HIGH POST-HARVEST LOSSES**

Poor post-harvest handling, limited cold storage, and inefficient logistics lead to losses of 30-50% in fresh produce supply chains. *(Mutambara et al., Food Security journal (2018) s12571-018-0797-0)*

Many smallholders lack access to affordable storage, packaging, and transport solutions, especially for perishable crops. This leads to food waste, income loss, and market exclusion.
- 3 DEPENDENCY WITHOUT RESILIENCE**

In projects where inputs and services are subsidised or donor-driven, farmers often become dependent. When funding ends, systems collapse. Ownership and autonomy are critical; but rarely built in.
- 4 CONTEXT MISMATCH**

Models that work in Kenya or Ghana don't necessarily work in Angola or Mozambique. Local infrastructure, policy, and culture matter. *(Nucleus-Outgrower Systems Study, Nature Food (2020) EFFECT~1)*

Projects that import external models without adapting to local political economy, trust dynamics, and land tenure realities often struggle.
- 5 WEAK CONTRACT ENFORCEMENT AND SIDE-SELLING**

Without enforceable and trusted supply agreements, outgrower schemes are vulnerable to side-selling (where farmers bypass the buyer to chase higher spot prices); destabilising markets and discouraging investment in farmer support.

The Nexus Model: Connecting Farmers to a Functioning System



After decades of trial, the agricultural development sector has begun to reach consensus: supporting smallholder farmers only works when it's systemic.

The most promising model emerging from research and field evidence is the nexus model; also referred to as the nucleus-outgrower model. Rather than treating farmers as independent units in need of isolated support (training, credit, or inputs), this approach views them as part of a broader agricultural ecosystem, anchored by a commercial agribusiness.

What Is the Nexus Model?

The nexus model places a larger, often vertically integrated farm or agribusiness, “the nucleus” at the center of a coordinated network of smallholder suppliers. The nucleus plays multiple roles:

- Buyer and market stabilizer
- Technical advisor and trainer
- Quality enforcer
- Aggregator and post-harvest handler
- Logistics and distribution facilitator
- Bridge to financial and institutional support

According to the Smallholder Outgrower Schemes: Principles of Success report, successful nexus models are built around six key variables:

SUCCESS FACTORS	WHY IT MATTERS
1. Stable Offtake Agreements	Farmers need a guaranteed buyer at transparent, fair prices.
2. Post-Harvest Infrastructure	Cool Storage, packaging, and aggregation reduce losses and improve quality.
3. Embedded Technical Assistance	Training and support tailored to local context boost productivity and trust
4. Logistics and Distribution	Efficient transport ensures access to market and preserves value.
5. Market Orientation and Standards	Farmers learn to meet commercial requirements, enabling scale and consistency.
6. Payment Reliability	Timely, predictable payment cycles build trust and financial planning capacity.

In this context, the nexus model becomes not just ideal, but essential. A central, professionally run agribusiness can overcome structural barriers that smallholder farmers cannot solve alone; unlocking food systems that are both inclusive and efficient.

(KIT and FAO. (2017). Smallholder Outgrower Schemes: Principles of Success. Royal Tropical Institute and Food and Agriculture Organization.)
(Mutambara, J., et al. (2018). "Post-Harvest Losses and Food Security in Sub-Saharan Africa." Food Security Journal, 10(5), 1111–1122.)
(Nature Food. (2020). Nucleus-Outgrower Systems Study.)

Fazenda Girassol as a Nexus

Fazenda Girassol embodies the nucleus role envisioned in the literature.

It offers:

- Guaranteed offtake through structured vendor contracts
- Internal transport and cold chain logistics
- Access to urban retail markets through Plantiloge shops
- A fast cash cycle that allows rapid payments to smallholder vendors
- Institutional knowledge of what works in Angola's regulatory, infrastructural, and cultural environment

Building the Backbone: Fazenda Girassol's Integrated Supply Chain

In many parts of Africa, the biggest challenge facing smallholder farmers isn't what happens on the farm; it's what happens after the harvest.

Without cold storage, transport, or access to reliable markets, even high-quality crops can spoil before they reach a buyer. The result? Post-harvest losses, low bargaining power, and a cycle of underinvestment.

Fazenda Girassol recognised early on that to support smallholder farmers sustainably, it had to build the infrastructure that the broader system lacked; from packhouse to point-of-sale.





Cold Storage and Aggregation

Just north of Luanda, Fazenda Girassol operates its own packhouse, cold storage facility, and warehouse. This hub serves as the primary aggregation point for both FGs produce and that of its contracted smallholder vendors.

Key benefits include:

- Immediate cooling and grading to preserve quality
- Efficient aggregation for mixed loads from multiple farmers
- Centralised quality control to ensure compliance with commercial standards

By centralising these functions, Fazenda Girassol creates a shared backbone that smallholders could not afford to build or access independently.



Controlled Transport

Fazenda Girassol owns and operates a fleet of refrigerated trucks that transport produce daily from the warehouse to retail and wholesale clients across Luanda.

These vehicles:

- Ensure temperature control throughout the journey
- Operate on tight, reliable schedules
- Reduce post-harvest loss, especially for highly perishable goods
- Provide predictable logistics for smallholder vendors, removing a major barrier to scale

This control over the first-mile and last-mile logistics is a key enabler of the vendor model, giving smallholders reliable access to urban demand.



The Plantiloge Retail Network

Perhaps the most unique feature of the farms supply chain is its retail footprint. Under the Plantiloge brand, they have established a network of 50+ small-format retail shops currently concentrated across Luanda province, strategically placed in informal, peri-urban, and lower-income neighbourhoods.

These shops:

- Offer affordable, fresh produce to underserved consumers
- Shorten the supply chain, reducing handling and pricing layers
- Create a faster cash cycle for Fazenda Girassol, allowing quicker payments to smallholder vendors
- Allow for more pricing power and customer feedback, which most suppliers lack

Why It Matters for Smallholders

This integrated supply chain:

- Proximity to farmers via the collection hubs
- Enables immediate procurement and payment
- Allows Fazenda Girassol to buy what it doesn't grow, diversifying its offering
- Gives smallholder farmers access to formal retail without middlemen
- Reduces waste and increases margins for all players
- Reinforces FGs role as a true nucleus in the nexus model

Its a system that turns farming from a gamble into a plan, where a farmer can produce with confidence, knowing there's a real, functioning market on the other end.

A Vendor Model Built on Realities, Not Ideals

In theory, many agribusinesses aim to deeply support smallholder farmers, providing inputs, financing, technical assistance, and management oversight. But in practice, this level of engagement is complex, costly, and difficult to scale, especially in environments like Angola, where infrastructure is limited and trust in formal systems is still developing.

Fazenda Girassol has spent years learning from experience. While earlier efforts to more directly manage smallholder production were well-intentioned, they often faced challenges ranging from poor accountability and misaligned expectations to inconsistent results and logistical bottlenecks.

Today, Fazenda Girassol has pivoted toward a vendor-based model; one that prioritises what it does best: providing a reliable market.



How the Vendor Model Works

Fazenda Girassol no longer involves itself in the day-to-day farming decisions of smallholders. Instead, participating farmers operate as independent vendors, supplying specific crops to FG under clear terms.



Key characteristics of the model:



Farmers remain autonomous, responsible for their own production methods, timelines, and input sourcing



Fazenda Girassol provides specifications for quality, quantity, and packaging - offering feedback as needed



No inputs or credit are provided by Fazenda Girassol, simplifying the relationship and reducing dependency



Fazenda Girassol procures primarily what it does not grow itself, expanding its offering to consumers



Fast cash cycle through the retail network allows for immediate payment upon delivery

This model works because it plays to the farms strengths: infrastructure, logistics, cash availability, retail, and market access; not farming oversight.

By the Numbers: Fazenda Girassol's Vendor Network at a Glance

As of 2024, FG procures approximately 2,236 metric tons of fresh produce per year from smallholder farmers across multiple regions of Angola. This includes items such as okra, tomatoes, leafy greens, onions, potatoes, pumpkins, ginger, and citrus fruits — crops that FG does not grow itself but that are in high demand at retail level.

FG currently works with over 193 smallholder vendors, many of whom supply on a weekly or seasonal basis, depending on the crop. These farmers are integrated into FG's logistics and payment systems, allowing for same-week payment after quality checks and acceptance at the warehouse.

Small Holder Farmer Statistics

193 TOTAL SMALL
HOLDER FARMERS
SUPPORTED

FAZENDA GIRASSOL PRODUCTION

Product	Kilogram
Pumpkin	179 209
Watercress	18 520
Lettuce	279 772
Pineapple	45 803
Banana	7 241 181
Kale	175 047
Aromatic Herbs	42 117
Passion Fruit	74 494
Papaya	334 184
Cucumber	224 299
Dragon Fruit	63 699
TOTAL	8 678 326

8 678 326

TOTAL KG'S OF OWN PRODUCTION BY
FAZENDA GIRASSOL IN 2024

SMALLHOLDER PURCHASES

Product	Kilogram
Avocado	71 005
Pumpkin	3 298
Pineapple	375 506
Potato	1 379 541
Onion	1 760
Carrot	22 280
Zucchini	2 070
Ginger	21 747
Chilli Pepper	6 265
Orange	154 190
Lemon	32 571
Passion Fruit	27
Watermelon	136 972
Papaya	805
Bell Pepper	6 766
Dragon Fruit	5 218
Okra	173
Tomato	16 733
TOTAL	2 236 927

2 236 927

TOTAL KG AMOUNT OF PRODUCTS BOUGHT
IN 2024 FROM SMALL HOLDER FARMERS



Why It Works in Angola

In Angola's agricultural landscape, vendor models offer a pragmatic middle ground. Many smallholder farmers:

- Prefer independence over formal contractual relationships
- Already have access to land, labour, and basic equipment
- Lack only a reliable buyer and transport to reach the market

Fazenda Girassol fills that gap. It doesn't try to transform farmers into something they're not; it simply creates space for them to succeed within a functioning supply chain.

The model also avoids many of the issues associated with failed outgrower schemes:

- No input debt or disputes
- Fewer compliance burdens
- Easier scaling, since onboarding is based on product, not location or contracts
- From Transaction to Trust

While the vendor relationship is transactional in structure, Fazenda Girassol builds trust through consistency:

- Clear pricing and fast payment
- Open communication about standards and volumes
- Predictability that allows farmers to plan ahead and grow more

And while the business is not currently involved in production-side training, it does offer occasional technical advice, field visits, and buyer feedback, especially for high-potential vendors.

On top of this essential foundation, FG also aims to build a training intervention supported by an adequate material and human infrastructure.





A Platform for Inclusive Growth; Scaling Smallholder Impact in Angola

Fazenda Girassol's model is not a pilot. It's a functioning, profitable system, and it's working today. What sets it apart is not just its ability to engage smallholder farmers, but its ability to do so at scale, in one of the most logistically and economically challenging environments in Africa.

The core strength? It is not reliant on donor funding, nor on theory. It has invested in infrastructure, relationships, and market understanding; laying the groundwork for long-term, inclusive growth.

A Scalable, Replicable Model

Fazenda Girassol's model is already reaching hundreds of smallholder vendors and aggregating meaningful volumes of produce. Its supply chain - from aggregation to cold storage to urban retail - is built to scale. As demand rises, they have the infrastructure, retail footprint, and procurement systems to bring more smallholder farmers into the fold.

This makes Fazenda Girassol not just a buyer, but a platform for smallholder participation in Angola's formal food economy.

Growing Farmers, Not Just Volumes

By maintaining clear quality standards, predictable payments, and real market access, Fazenda Girassol helps smallholder vendors invest in their own growth. Many begin with one or two crops and scale up their production and income over time, using Fazenda Girassol as their anchor buyer.

In doing so, this strengthens local supply, reduces Angola's dependence on food imports, and redirects value into rural economies.

Creating Systems that Others Can Build On

The value of this model extends beyond its own operations. It is creating a replicable blueprint for other private sector actors, development finance institutions, and policymakers to support agriculture that is:

- Commercially viable
- Environmentally sustainable
- Inclusive of rural producers

The Opportunity Ahead

With rising demand for fresh, locally produced food in Angola's urban centres, and a growing recognition among investors that food systems must be inclusive, Fazenda Girassol is positioned to play a catalytic role in shaping Angola's next chapter of agricultural development.

By scaling what it already does well, they can support thousands more smallholder farmers, reduce rural poverty, and contribute to national food security, not as a charity, but as a commercially sound, socially aligned business.





fazenda
irass

Cultivating Impact

Key Insights from Fazenda Girassol's Journey

Fazenda Girassol stands as a powerful example of how agriculture can drive economic, social, and environmental progress. By balancing commercial viability with sustainability and community development, the farm has redefined what is possible for agribusiness in Angola.

This report has explored Fazenda Girassol's commitment to responsible farming, highlighting its economic contributions, environmental stewardship, and role in strengthening Angola's food system. As we reflect on the farm's journey, three key insights emerge:

- Sustainable agriculture can be both profitable and socially responsible.
- Investing in people - farmers, employees, and communities - is the foundation of long-term success.
- Fazenda Girassol's model is scalable, providing a blueprint for broader agricultural transformation in Angola.



Fazenda Girassol is more than a farm, it is a catalyst for change in Angola's agricultural sector.

A Blueprint for Angola's Agricultural Future

Angola has the potential to become a leader in sustainable agriculture in Africa, and Fazenda Girassol's model offers a replicable and scalable approach. By reducing reliance on food imports and increasing domestic production, the country can build a more self-sufficient food system. The farms Outgrower Programme demonstrates how integrating smallholder farmers into commercial supply chains can improve rural economies, create employment, and stabilise agricultural markets.

Furthermore, by scaling regenerative farming practices, such as precision irrigation, agroforestry, and carbon sequestration initiatives, Angola can enhance climate resilience and environmental sustainability. This model also presents a compelling case for investment, positioning Angola as a viable destination for agribusiness funding while showcasing that responsible investment in agriculture can yield economic, social, and environmental dividends.

Key Takeaways for Investors and Stakeholders

For funders, investors, and policymakers, Fazenda Girassol provides a real-world example of impact-driven investment in agriculture. Key lessons from this model include:

BALANCING PROFITABILITY AND SOCIAL IMPACT:

Investing in sustainability leads to long-term economic resilience.

EMPOWERING PEOPLE:

Success in agriculture is built on strong workforce development and community engagement.

LEVERAGING INNOVATION:

Precision agriculture, agroforestry, and renewable energy create more efficient and sustainable operations.

THE POWER OF PARTNERSHIPS:

Collaborations with smallholder farmers, scientific institutions, and funding partners drive meaningful impact.

By aligning agricultural investment with global sustainability frameworks, businesses and investors can unlock new opportunities while contributing to Angola's economic transformation.

Crossing Borders:

Taking Fazenda Girassol Produce to the World

In 2024, Fazenda Girassol reached a major milestone in its journey toward global competitiveness — the launch of its first international exports. Leveraging its GLOBALG.A.P certification and years of investment in quality systems, FG began exporting fresh dragon fruit to Europe, marking its entry into global markets and into generating revenues in hard currency.

Currently, the farm exports approximately 8 tonnes of dragon fruit weekly, with volumes increasing as supply chains and market relationships deepen. This achievement is not only a testament to the farm's product quality and compliance, but also to its capacity to operate at international standards in traceability, food safety, and logistics.

Encouraged by the early success of dragon fruit exports, Fazenda Girassol is now laying the groundwork to begin exporting bananas — one of its largest and most established crops — to European markets. This diversification and growth into export markets signals a new chapter in the farm's development, anchoring its role not just as a domestic supplier, but as a regional and global player in sustainable agriculture.

Why This Matters:

Generates income from outside Angola, reducing exposure to local market volatility

Strengthens FX inflows and boosts Angola's agricultural trade balance

Encourages world-class standards through compliance with global certifications

Lays the foundation for future exports from smallholder farmers under Fazenda Girassol's value chain

Laying the foundation for sustainable export-led growth





Reinforcing Angola Capital Partner's Vision

Angola Capital Partners (ACP) envisions a future where agricultural investments in the Agri and food value chain deliver lasting economic, social, and environmental benefits. In Fazenda Girassol, this vision is already a reality.

This project demonstrates the power of strategic investment in sustainable agriculture, proving that Angola's future lies in self-sufficiency, responsible land management, and community-driven growth.

By continuing to support projects that prioritise sustainability, innovation, and social impact, ACP is laying the groundwork for a stronger, more resilient agricultural sector, one that feeds the nation, creates jobs, and preserves the environment for future generations.

Fazenda Girassol is not just a success story, it is a roadmap for the future of Angolan agribusiness. Through a commitment to sustainability, responsible investment, and inclusive growth, the farm has demonstrated how agriculture can be a force for positive change.

As Angola moves towards greater agricultural self-sufficiency, Fazenda Girassol's model offers a scalable and replicable approach that can inspire future agribusiness ventures across the country and beyond.



Acronyms & Abbreviations

ACP	Angola Capital Partners
AES	Angoal Environmental Serviços Lda
AST	African Selectrion Trust
BAI	Banco Angolano de Investimentos
CV	Calorific Value
DFID	UK Department for International Development
ESG	Environmental, Social and Governance
FAO	Food and Agriculture Organization
FG	Fazenda Girassol
FIPA	Fundo de Investimento Privado – Angola
GDP	Gross Domestic Product
GIIN	Global Impact Investing Network
GoA	Government of Angola
IFC	International Finance Corporation
IFU	Danish Investment Fund for Developing Countries
IRIS	Impact Reporting and Investment Standards
NDP	National Development Plan
NHDP	National Housing Development Program
SADC	Southern African Development Community
SDG	Sustainable Development Goal
SEMS	Social and Environmental Management System
STD	Sexually Transmitted Disease
TAC	Total Allowable Catch
TDU	Thermal Desorption Unit
TWMF	Total Waste Management Facility
UN	United Nations
UNDP	United Nations Developpment Programme
USD	United States Dollar
WHO	World Health Organisation

THIS REPORT IS PRODUCED
AND DESIGNED BY



DESIGN

Miss Ruby

COPYWRITING

Good Morning Media

PHOTOGRAPHY & VIDEOGRAPHY

Heinz Boesenberg

RESEARCH

RAMO